

## MFC® BLUE

### ALKALINE MILK FROTHER CLEANER

#### KILLS ALL COMMON BACTERIA ASSOCIATED WITH MILK

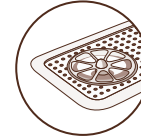
Independent laboratory testing shows Cafetto® MFC® Blue kills 99.999% of E-Coli, Salmonella, Listeria and Enterococcus when used in accordance with instructions.

#### HIGH PERFORMANCE

Provides excellent milk fat removal along with descaling of automatic milk frothers. MFC® Blue also leaves no trace of odour after rinsing.

#### SAFE FOR YOU AND YOUR MACHINE

Safe for all machine parts, MFC® Blue is listed with NSF. It has been tested, evaluated and passed the most stringent toxicology and corrosivity standards. The ingredients and formulation of the products that are NSF certified are safe, leave no harmful residues and do not cause corrosion within the coffee machine.



Cafetto® is proud to be certified by independent globally-recognised industry bodies



#### CERTIFICATIONS



- Slightly loosen the cap over the measuring reservoir.
- Squeeze the bottle until reservoir measures 50mL, remove cap and pour from the reservoir.

#### CLEANING THE MILK FROTHER

- Add 50mL of MFC® Blue to 1 Litre of warmwater in a cleaning container. Ensure you replace the cap and seal tightly after pouring the required dose.
- Insert the milk frother suction tube into the solution.
- Run the entire solution through the frother.
- Repeat the above procedure with 1 Litre of clean water to rinse all the components thoroughly.

Do not mix with other chemicals.

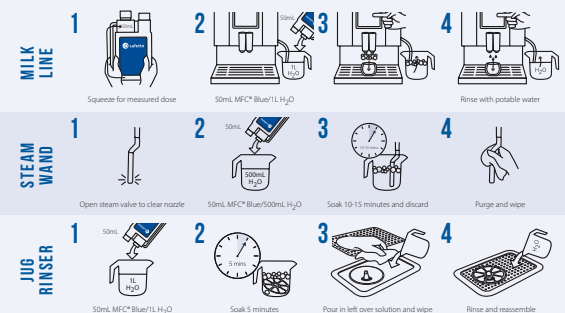
#### CLEANING JUG RINSERS

- Add 50mL of MFC® Blue to 1L of warmwater in a cleaning container. Ensure you replace the cap and seal tightly after pouring the required dose.
- Disassemble jug rinser and place parts in solution to soak for 5 minutes.
- Use a cloth dipped in solution to wipe over surface.
- Pour remaining solution over surface.
- Rinse all parts with potable water and reassemble.

#### RECOMMENDED FOR

Daily use on espresso machines and jug rinsers.

#### HOW TO USE



MFC® is a registered trademark of Cafetto Pty Ltd.

PRODUCT NAME	SIZE	TYPE OF UNIT	CARTON CODE	GROSS WEIGHT (KG):	GROSS WEIGHT (LBS):	NET WEIGHT (KG):	NET WEIGHT (LBS):	DIMENSIONS (CM) L X W X H:	DIMENSIONS (IN) L X W X H:
MFC® Blue	1L x 6 Bottles	Chamber Bottle	E14005	7.6	16.8	6.7	14.8	28 x 19 x 28	11 x 7.5 x 11